



architectural

# Kap 4.1" Round Halogen/CMH

Ceiling Recessed Trimless Fixed Downlight

## Description

Kap Recessed combines a trimless edge, exquisitely textured finish and deep recess of the highest quality metal halide or halogen light source to form a sculptural blend of architecture and science. When installed, the ceiling appears as if crafted from a thick, rich material and the room glows with striking colors rendered in crisp white light.

## Lamps

- Halogen: 50W T4 bi-pin, GY 6.35
- Metal Halide: 35W T4 bi-pin, G 8.5

## Construction

- Injection molded specular reflector with matte finish
- Lamp module is diffused with a low mineral content, color neutral, glass diffuser

## Notes

- Fixture comes with separate trimless installation frame which allows for installation in sheet rock and special construction ceilings up to 1.2" thick
- Fixture's wattage minimum for LED replacement lamp is 20W
- Listings: UL Listed, dry location only

## Electrical

- Halogen fixture includes electronic low voltage transformer.
- Metal halide fixture includes electronic non-dimmable ballast.

## Housing

- Non-IC rated housing for new construction, 20 ga. sheetmetal supplied with (2) mounting bars and removable mounting brackets.

## Photometrics

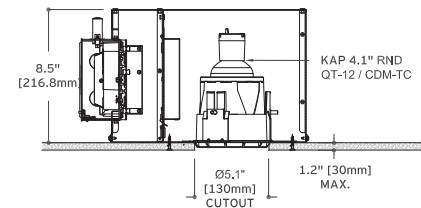
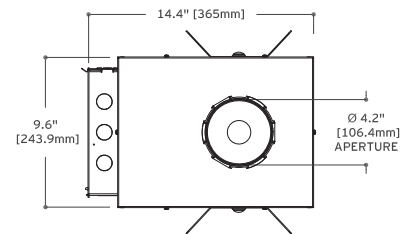
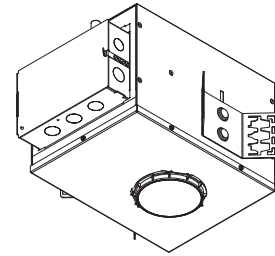
For current IES files please visit [usa.flos.com](http://usa.flos.com)

## Warranty

2 years from date of sale

Fixture Type .....

Job Name .....



## How to Specify ex. 03.4400.GL.90

QTY	Item Number	Description	Finish	Power Supply
	03.4400	Kap Recessed 4.1" Round, Halogen, 50W, T4 bi-pin, GY 6.35	<input type="checkbox"/> 74 = Black <input type="checkbox"/> B1 = White <input type="checkbox"/> BU = Blue <input type="checkbox"/> CU = Copper <input type="checkbox"/> GL = Gold	90 = Housing with integral transformer, ELV, 120V
	03.4401	Kap Recessed 4.1" Round, Metal Halide, 35W, T4 bi-pin, G 8.5	<input type="checkbox"/> 74 = Black <input type="checkbox"/> B1 = White <input type="checkbox"/> BU = Blue <input type="checkbox"/> CU = Copper <input type="checkbox"/> GL = Gold	90 = Housing with integral ballast, non-dimmable, 120-277V

