



architectural

Light Cut LED

Knife-edge interior cove system for interior architecture

Description

The Light Cut is a linear cove lighting system comprising a knife-edge extruded profile which integrates perfectly in drywall ceilings and moveable spot modules. To achieve more innovative light effects you can use linear LEDs in warm white or RGB for ambient light. The LED modules are anchored directly to the profile and are interconnectable. The system is available in two sizes depending on the installation. It has accessories for visual comfort optimization and color filters. Perimeter channels or central installation can be made with this system using double channels with two opening widths.

Lamps

- LED Spots
 - 6W, 800lm, 3000K, CRI 80
 - 10W, 1100lm, 3000K, CRI 80
 - 14.5W, 1440lm, 3000K, CRI 90
 - 14.5W, 1780lm, 3000K, CRI 80
- LED Linear Strips
 - 1.75W, 77lm, RGB
 - 3.5W, 144lm, RGB
 - 3.5W, 228lm, 3000K, CRI 85
 - 7W, 456lm, 3000K, CRI 85

Construction

- Knife edge profiles made of extruded aluminum
- Composite housings are composed of fiberglass covered in plaster for a drywall look.

Notes

- Profile is available for 5/8" drywall or 1/2" drywall applications.
- System available in two standard openings: 2.7" and 5.2"
- Accessory available to remove the Light Strip modules much easier
- Listings: UL Listed, IP 20 dry rated only, Class 2

Electrical

- Spot modules have integral power supplies
- J-boxes should be placed with regularity throughout the cove.
- Distance between j-boxes should be decided based on how many spot modules are being utilized
- Spot modules wattage is model dependent
- Linear modules are constant 24 volt with remote power supply, to be ordered separately
- Linear modules are 6 watts per linear foot for the white option and 3 watts plf for the RGB option
- RGB controls to be ordered separately as required

Housing

- Cove system designed for use with composite housings
- Housings are half circles
- Housings are made of fiberglass covered in plaster and should be painted on the jobsite, to match the ceiling finish

Photometrics

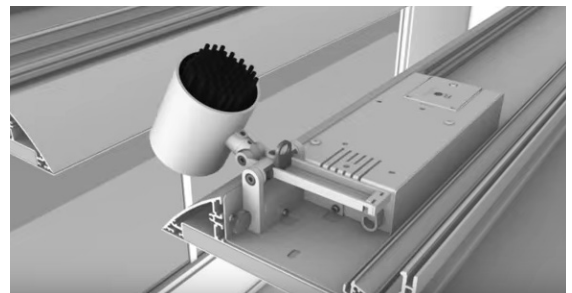
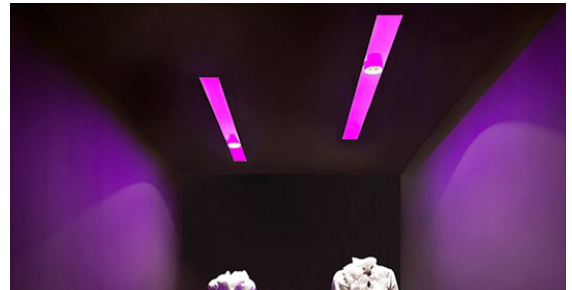
For current IES files please visit usa.flos.com

Warranty

2 years from date of sale

Fixture Type

Job Name



Luminaires

Spot Modules



- Accent LED spot modules can be rapidly exchanged and repositioned without tools.

Linear Strip Modules



08.8294

- Linear LED can be rapidly exchanged and repositioned with two mounting brackets





architectural

Light Cut LED

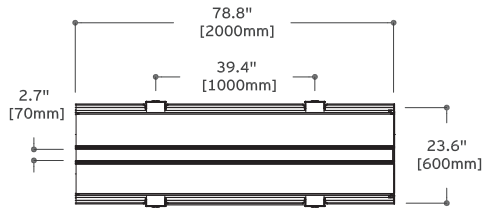
Knife-edge interior cove system for interior architecture

Fixture Type

Job Name

Channel 2.75" [70mm] Profile

Light Cut 2.75" [70mm] Aluminum profile is adapted to 5/8" ceiling thickness.
The Composite Housing* is developed for 1/2" ceiling thickness.

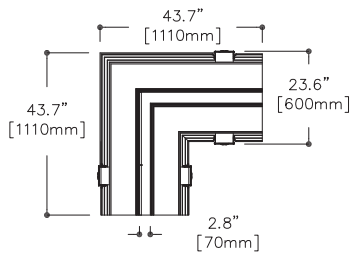


Length	Part Number for Aluminum profile (1 unit per code)	Finish	Part Number for Composite Housing*		
			1 Unit	3 units	9 units
78.74" (2m)	08.8550-1.14.90	14 = Black	SA.2517.1	SA.2510.1	SA.2511.1
	08.8550-1.30.90	30 = White			

* Composite housing reduces the channel from 2.75" to 2.36".

Channel 2.75" [70mm] Corner

Light Cut 2.75" [70mm] Composite Corner + Aluminum Profile for 5/8" ceiling

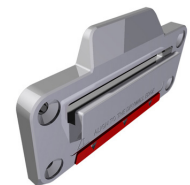


Length	Part Number for Aluminum Corner	Part Number for Composite Corner Housing
43.7" x 43.7" (1.01m x 1.01m)	SA.2512-1.120-P	SA.2512.3.001

Optional Accessories

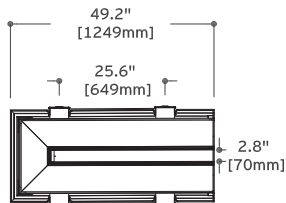
Ceiling Anchorage

08.8426.00



Channel 2.75" [70mm] End Cap

Light Cut 2.75" [70mm] Composite End Cap + Aluminum Profile for 5/8" ceiling



Length	Part Number for Aluminum End Cap	Part Number for Composite End Cap Housing
39.4" [1m]	SA.2513.3.120-P	SA.2513.3.001





architectural

Light Cut LED

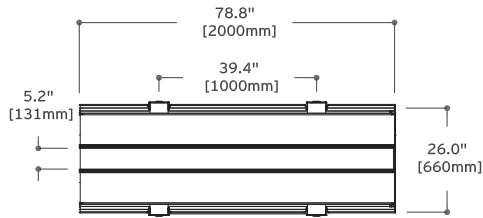
Knife-edge interior cove system for interior architecture

Fixture Type

Job Name

Channel 5.12" [130mm] Profile

Light Cut 5.12" [130mm] Aluminum profile is adapted to 5/8" ceiling thickness.
The Composite Housing* is developed for 1/2" ceiling thickness.

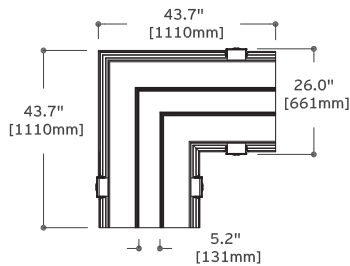


Length	Part Number for Aluminum profile (1 unit per code)	Finish	Part Number for Composite Housing*		
			1 Unit	3 units	9 units
78.74" (2m)	08.8550-1.14.90	14 = Black	SA.2518.1	SA.2514.1	SA.2500.1
	08.8550-1.30.90	30 = White			

* Composite housing reduces the channel from 5.12" to 4.72".

Channel 5.12" [130mm] Corner

Light Cut 5.12" [130mm] Composite Corner + Aluminum Profile for 5/8" Ceiling

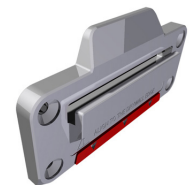


Length	Part Number for Aluminum Corner	Part Number for Composite Corner Housing
43.7" x 43.7" (1.01m x 1.01m)	SA.2515.3.120-P	SA.2515.3.006

Optional Accessories

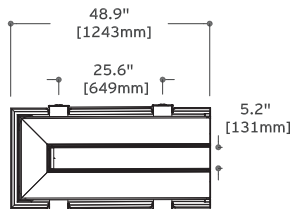
Ceiling Anchorage

08.8426.00



Channel 5.12" [130mm] End Cap

Light Cut 5.12" [130mm] Composite End Cap + Aluminum Profile for 5/8" Ceiling



Length	Part Number for Aluminum End Cap	Part Number for Composite End Cap Housing
39.4" (1m)	SA.2516.3.120-P	SA.2516.3.001





architectural

Light Cut LED

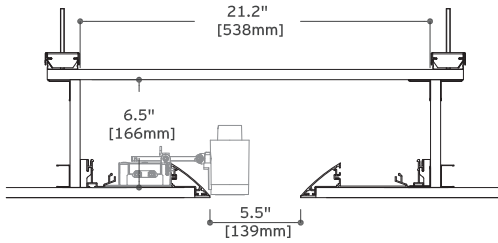
Knife-edge interior cove system for interior architecture

Fixture Type

Job Name

Perimeter Profile

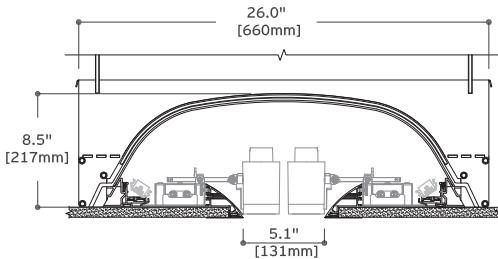
Light Cut Perimeter Aluminum Profile for 5/8" ceiling thickness



Length	Part Number for Aluminum profile (1 unit per code)	Finish
39.375" (1m)	08.8374-1.14	14 = Black
	08.8374-1.30	30 = White
78.74" (2m)	08.8372-1.14	14 = Black
	08.8372-1.30	30 = White

Perimeter Corner

Light Cut Perimeter Aluminum Profile Inner/Outer Corner for 5/8" Ceiling

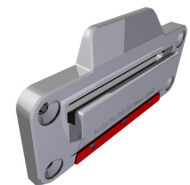


Length	Part Number for Inside Corner Aluminum profile	Finish	Part Number for Outside Corner Aluminum profile	Finish
43.7" x 43.7" (1.01m x 1.01m)	08.8376-1.14	14 = Black	08.8378-1.14	14 = Black
	08.8376-1.30	30 = White	08.8378-1.30	30 = White

Optional Accessories

Ceiling Anchorage

08.8426.00





architectural

Light Cut LED

Knife-edge interior cove system for interior architecture

Fixture Type

Job Name

Light Strip Modules

Light Strip RGB Module

RGB module indirect lighting developed to be installed in the Light Cut System.

Light Strip Module

Indirect lighting module developed to be installed in the Light Cut System.



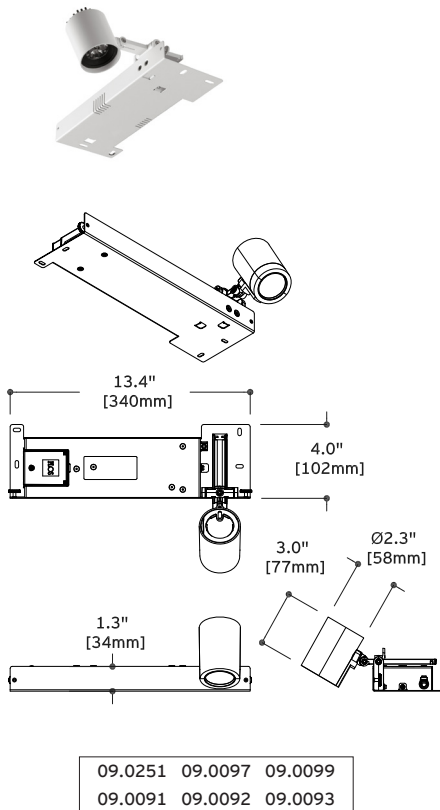
08.8294

Length	Initial Lumen	Watts	Part Number
7.8"	77	1.75	08.8294.00A9S
15.5"	154	3.5	08.8296.00A9S

Length	CRI	CCT	Initial Lumen	Watts	Part Number
7.8"	85	3000	228	3.5	08.8512.00.90
15.5"			456	7	08.8513.00.90

Spot Modules

LED Spot Module to be installed in front channel of the Light Cut profile



CCT	CRI	Initial Lumen	Wattage	Beam Spread	Part Number	Driver	Classification
3000	80	1100	10	14	09.0250.14A90	120V Non Dimming	2
					09.0250.30A90		
					09.0250.14A9V		
				09.0250.30A9V			
				26	09.0251.14A90	120V Non Dimming	
					09.0251.30A90		
	09.0251.14A9V						
	09.0251.30A9V						
	80	800	6	15	09.0086.14A90	120-277V 0-10V Dimming	2
					09.0086.30A90		
					09.0087.14A90		
				09.0087.30A90			
41				09.0088.14A90	120-277V 0-10V Dimming		
				09.0088.30A90			
	09.0097.14A90						
90	1440	14.5	23	09.0097.30A90	120-277V ELV Dimmable 120V only	1	
				09.0098.14A90			
				09.0098.30A90			
			43	09.0099.14A90			120-277V 0-10V Dimming
				09.0099.30A90			
				09.0091.14A90			
80	1780	14.5	28	09.0091.30A90	120-277V ELV Dimmable 120V only	1	
				09.0091.14A9V			
				09.0091.30A9V			
				09.0092.14A90			
				09.0092.30A90			
				09.0092.14A9V			
			32	09.0092.30A9V	120-277V 0-10V Dimming		
				09.0093.14A90			
				09.0093.30A90			
				09.0093.14A9V			
				09.0093.30A9V			
				09.0093.30A9V			





architectural









Light Cut LED

Knife-edge interior cove system for interior architecture

Fixture Type

Job Name

Optional Accessories

Image	QTY	Item Number	Description
		08.8502.14	Honeycomb anti-glare screen, to be used only with LED Array Spots (Classification 1)
		08.8501.64.0D	Blue Filter, to be used only with LED Array Spots (Classification 1)
		08.8501.65.0D	Sky Blue Filter, to be used only with LED Array Spots (Classification 1)
		08.8501.66.0D	Amber Filter, to be used only with LED Array Spots (Classification 1)
		08.8501.67.0D	Red Filter, to be used only with LED Array Spots (Classification 1)
		08.8501.69	Hot Light Lens, to be used only with LED Array Spots (Classification 1)
		08.8501.CL	Cold Light Lens, to be used only with LED Array Spots (Classification 1)
		08.8501.DL	Day Light Lens, to be used only with LED Array Spots (Classification 1)





architectural









Light Cut LED

Knife-edge interior cove system for interior architecture

Fixture Type

Job Name

Optional Accessories (cont'd)

Image	QTY	Item Number	Description
		08.8501.ND	Neodimium Lens, to be used only with LED Array Spots (Classification 1)
		08.8380.30	Screening cylinder, White, to be used only with Power LED Spots (Classification 2)
		08.8380.14	Screening cylinder Power Led, Black, to be used only with Power LED Spots (Classification 2)
		08.8363.30	Filter-Holder, White, to be used only with Power LED Spots (Classification 2)
		08.8363.14	Filter-Holder, Black, to be used only with Power LED Spots (Classification 2)
		08.8182.14	Honeycomb anti-glare screen, to be used only with Power LED Spots (Classification 2)
		08.8230.64.0D	Blue Filter, to be used only with Power LED Spots (Classification 2)
		08.8230.65.0D	Sky Blue Filter, to be used only with Power LED Spots (Classification 2)





architectural






Light Cut LED

Knife-edge interior cove system for interior architecture

Fixture Type

Job Name

Optional Accessories (cont'd)

Image	QTY	Item Number	Description
		08.8230.66.0D	Amber Filter, to be used only with Power LED Spots (Classification 2)
		08.8230.67.0D	Red Filter, to be used only with Power LED Spots (Classification 2)
		08.8230.98.0D	UV Filter, to be used only with Power LED Spots (Classification 2)
		08.8230.CL	Cold Light Lens, to be used only with Power LED Spots (Classification 2)
		08.8230.DL	Day Light Lens, to be used only with Power LED Spots (Classification 2)





architectural

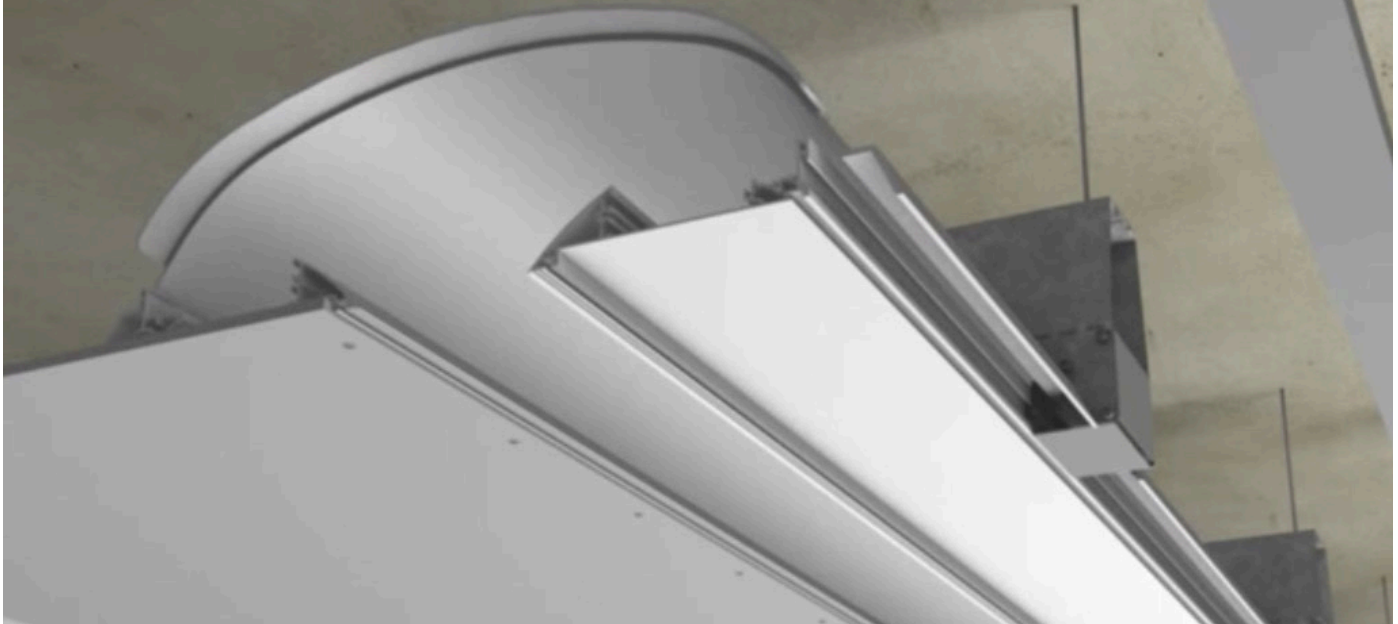
Light Cut LED

Knife-edge interior cove system for interior architecture

Fixture Type

Job Name

Visit FLOS Worldwide YouTube channel for installation videos



How to Specify Light Cut LED

A. Light Cut Channel 2.5" [70mm]

1. Aluminum profiles
2. Composite housing
3. End Cap
4. Corner
5. Choose the spotlights / LED bars

B. Light Cut Channel 5.11" [130mm]

1. Aluminum profiles
2. Composite housing
3. End Cap
4. Corner
5. Choose the spotlights / LED bars

C. Light Cut Perimeter

1. Aluminum profiles
2. Corner
3. Choose the spotlights / LED bars

Note: Specify quantities in boxes

A. Light Cut Channel 2.5" [70mm]								
Aluminum Profile 5/8" thickness			Composite Housing		End Cap		Corner	
<input type="checkbox"/> 08.8550-1.14.90	14 = Black	78.74" (2m)	<input type="checkbox"/> SA.2517.1	78.74" (2m) qty 1	<input type="checkbox"/> SA.2513.3.120-P	Aluminum Profile	<input type="checkbox"/> SA.2512.1.120-P	Aluminum Profile
<input type="checkbox"/> 08.8550-1.30.90	30 = White		<input type="checkbox"/> SA.2510.1	78.74" (2m) qty 3			<input type="checkbox"/> SA.2513.3.001	Composite
			<input type="checkbox"/> SA.2511.1	78.74" (2m) qty 9				

B. Light Cut Channel 5.11" [130mm]								
Aluminum Profile 5/8" thickness			Composite Housing		End Cap		Corner	
<input type="checkbox"/> 08.8550-1.14.90	14 = Black	78.74" (2m)	<input type="checkbox"/> SA.2518.1	78.74" (2m) qty 1	<input type="checkbox"/> SA.2516.3.120-P	Aluminum Profile	<input type="checkbox"/> SA.2515.3.120-P	Aluminum Profile
<input type="checkbox"/> 08.8550-1.30.90	30 = White		<input type="checkbox"/> SA.2514.1	78.74" (2m) qty 3			<input type="checkbox"/> SA.2516.3.001	Composite
			<input type="checkbox"/> SA.2500.1	78.74" (2m) qty 9				

C. Light Cut Perimeter						Light Strip Modules		Spot Modules				
Profiles			Corner									
<input type="checkbox"/> 08.8374-1.14	Black	39.4" (1m)	<input type="checkbox"/> 08.8376-1.14	Black	Inner Corner			<input type="checkbox"/> 08.8294.00A9S	<input type="checkbox"/> 09.0250.14A90	<input type="checkbox"/> 09.0086.14A90	<input type="checkbox"/> 09.0098.14A90	<input type="checkbox"/> 09.0092.14A90
<input type="checkbox"/> 08.8374-1.30	White		<input type="checkbox"/> 08.8376-1.30	White				<input type="checkbox"/> 08.8296.00A9S	<input type="checkbox"/> 09.0250.14A9V	<input type="checkbox"/> 09.0087.14A90	<input type="checkbox"/> 09.0099.14A90	<input type="checkbox"/> 09.0092.14A9V
<input type="checkbox"/> 08.8372-1.14	Black	78.74" (2m)	<input type="checkbox"/> 08.8378-1.14	Black	Outer Corner			<input type="checkbox"/> 08.8512.00.90	<input type="checkbox"/> 09.0250.30A9V	<input type="checkbox"/> 09.0087.30A90	<input type="checkbox"/> 09.0099.30A90	<input type="checkbox"/> 09.0092.30A9V
<input type="checkbox"/> 08.8372-1.30	White		<input type="checkbox"/> 08.8378-1.30	White				<input type="checkbox"/> 08.8513.00.90	<input type="checkbox"/> 09.0251.14A90	<input type="checkbox"/> 09.0088.14A90	<input type="checkbox"/> 09.0091.14A90	<input type="checkbox"/> 09.0093.14A90
						<input type="checkbox"/> 09.0251.30A90	<input type="checkbox"/> 09.0088.30A90	<input type="checkbox"/> 09.0091.30A90	<input type="checkbox"/> 09.0093.30A90			
						<input type="checkbox"/> 09.0251.14A9V	<input type="checkbox"/> 09.0097.14A90	<input type="checkbox"/> 09.0091.14A9V	<input type="checkbox"/> 09.0093.14A9V			
						<input type="checkbox"/> 09.0251.30A9V	<input type="checkbox"/> 09.0097.30A90	<input type="checkbox"/> 09.0091.30A9V	<input type="checkbox"/> 09.0093.30A9V			

FLOS USA
110 York Street
Brooklyn, NY 11201
(718).875.3472

For more information contact your representative or go to FLOSUSA.com.
©2016 Specifications and dimensions subject to change without notice. Issued 06.12.17

