



architectural

The Tracking Magnet Suspension Up & Down

High-tech LED lighting system for interior architecture

Description

The Tracking Magnet system is creative, flexible, reliable and precise. Accent fixtures can be rapidly exchanged and repositioned without tools using the magic of magnets. A variety of accent LED light elements achieve flexible yet precise illumination with artistic results. The extruded aluminum housing creates a clean 1/2" slot that can be run up, around and across walls and ceilings. The Tracking Magnet is available in recessed, surface, or pendant mounted applications, making it an option in even the most varied of job conditions. Vertical and horizontal corners complete the system. The Tracking Magnet is perfect for retail displays where frequent changes are typical and absolute performance is required.

Lamps

- Spot Tracking Magnet 50: LED
4.2W, 410lm, 2700K, CRI 90
4.2W, 410lm, 2700K, CRI 90
- Spot Tracking Magnet 90: LED
9.6W, 850lm, 2700K, CRI 90
9.6W, 1050lm, 3000k, CRI 90
- Spot Tracking Magnet 120: LED
12.5W, 1060lm, 3000k, CRI 90
12.5W, 1060lm, 3000k, CRI 90
- Anthony Spot Track: LED
17W, 1870lm, 3000K, CRI 90
17W, 1785lm, 2700K, CRI 90
- Light Stripe: LED
7.5W, 680lm, 2700K, CRI 80
7.6W, 700lm, 3000K, CRI 80
15W, 1360lm, 2700K, CRI 80
15W, 1400lm, 3000K, CRI 80
22.5W, 2039lm, 2700K, CRI 80
22.6W, 2100lm, 3000K, CRI 80
30W, 2719lm, 2700K, CRI 80
30W, 2800lm, 3000K, CRI 80
37.5W, 3399lm, 2700K, CRI 80
37.6W, 3500lm, 3000K, CRI 80
- Up Light: LED
7.6W, 870lm, 3000K, CRI 80
11.4W, 1305lm, 3000K, CRI 80
15.2W, 1740lm, 3000K, CRI 80

Notes

- The 90 and 120 spot tracking light modules are offered with a spot and a flood lens
- All available accessories for the Spot modules come with the product
- Fixture heads all rotate 360° and tilt 90° from nadir
- Listings: UL Listed, IP 20 dry rated only, Class 2

Construction

- Luminaires and profiles are made of extruded aluminum
- Profiles can not be field cut

Electrical

- 24V electrical system
- System is limited to a maximum power current of 4A and 100W to avoid overloads
- After every 96W make a new connection with a connection feed profile
- Wattage per linear foot is dependent upon quantity and type of light modules used, total max possible per linear foot is 32W
- EC to supply site cabling from driver to track location
- Specify one connection cable per driver
- On Board dimmable
- Shared power feed between up light and magnetic track

Suspension Profile

- Available in 39.4", 59" and 78.7" lengths as well as corner elements for continuous runs.
- Profile will ship with styrofoam fill, styrofoam maintains stability of profile and keeps track free of dust and paint.
- The corners are not fitted with indirect lighting.
- Suspension accessories (steel cable or rod) to be ordered separately.

Photometrics

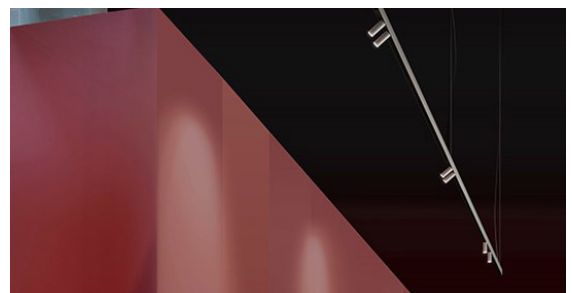
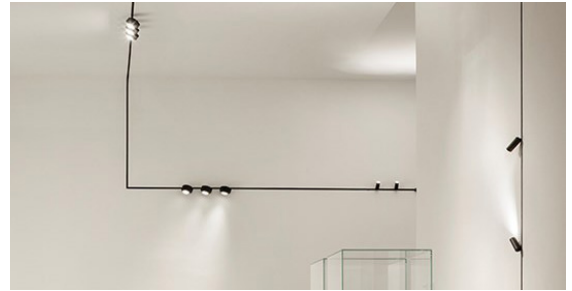
For current IES files please visit usa.flos.com

Warranty

2 years from date of sale

Fixture Type

Job Name



Luminaires

Spot Tracking Magnet 50



Spot Tracking Magnet 90



Spot Tracking Magnet 120



Anthony Spot Track



Light Strip



- Accent LED spot modules can be rapidly exchanged and repositioned without tools. Light elements are quick to position and connect automatically through the magic of magnets
- Built-in dimming knob dims fixture from 20-100%
- All available accessories ship with the product

F L O S . U S A
110 York Street
Brooklyn, NY 11201
(718).875.3472

For more information contact your representative or go to FlosUSA.com.
©2016 Specifications and dimensions subject to change without notice. Issued 05.05.17





architectural

The Tracking Magnet Suspension Up & Down

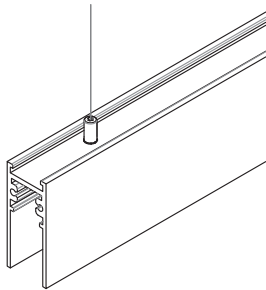
High-tech LED lighting system for interior architecture

Fixture Type

Job Name

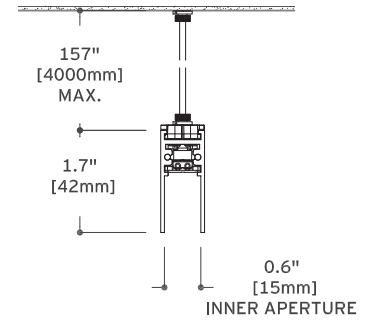
Profiles

The extruded aluminum housing creates a clean 1/2" slot. The magnetic luminaries are simply installed by insertion. Linear tracks are available in two versions: power feed profiles for connecting to a driver, and intermediate profiles. End caps and connection cables are included with each power feed profile. Internal foam for opening support should not be removed until after installation.



Length	Finish	Up Light Description	Part Number Feed Unit Profiles
39.4" (1m)	A40= White A05= Chrome A14= Black	UP light: 7.6W, 870lm, 3000K, CRI 80	06.1514
59" (1.5m)	A40= White A05= Chrome A14= Black	UP light: 11.4W, 1305lm, 3000K, CRI 80	06.1515
78.74" (2m)	A40= White A05= Chrome A14= Black	UP light: 15.2W, 1740lm, 3000K, CRI 80	06.1516

Length	Finish	Up Light Description	Part Number Feed Unit Profiles
39.4" (1m)	A40= White A05= Chrome A14= Black	UP light: 7.6W, 870lm, 3000K, CRI 80	06.1519
59" (1.5m)	A40= White A05= Chrome A14= Black	UP light: 11.4W, 1305lm, 3000K, CRI 80	06.1520
78.74" (2m)	A40= White A05= Chrome A14= Black	UP light: 15.2W, 1740lm, 3000K, CRI 80	06.1521



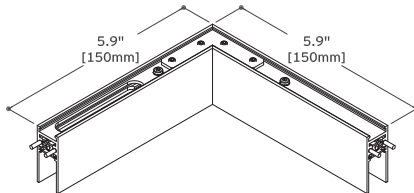
Corners

Horizontal corners available for 90° turns in the same plane, inside corner to transition from wall to ceiling or from wall to wall and external corners to transition from wall to wall surfaces.

Horizontal Corner Finish

06.1524

A40= White A05= Chrome A14= Black



Drivers

LED Driver- 96W Optronic 24V

LED96W24V-Non-Dim



End Caps

Endcaps comes with feed profiles. These should only be ordered separately if the installation is exclusively composed of intermediate elements.

End Caps

08.8890.14A

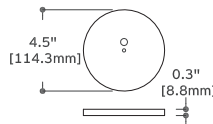


Ceiling Kits

Junction box plate for remote driver

Plate

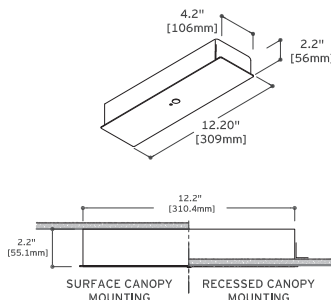
RM-C-B (Black)
RM-C-W (White)



Surface mount canopy

08U0004.30

Canopy for Tracking Magnet Suspension, 96W, White



Suspension Kits

Code	Up Light Description
60.3014	3.28 ft suspension rod with M6 thread canopy
60.3097	3.28 ft suspension rod extension set M6 thread
08.8634.00	13.12 ft steel wire. Recommended to be used on the corners

Finish

14= Black 11= White





architectural

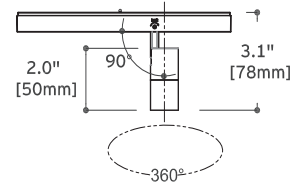
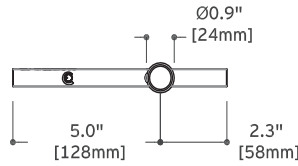
The Tracking Magnet Suspension Up & Down

High-tech LED lighting system for interior architecture

Fixture Type

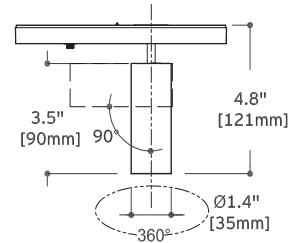
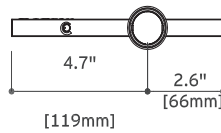
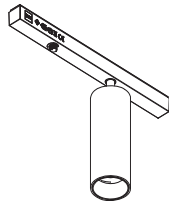
Job Name

Spot Tracking Magnet 50



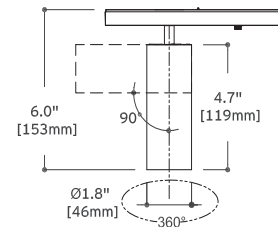
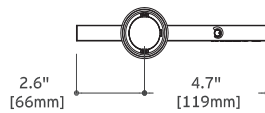
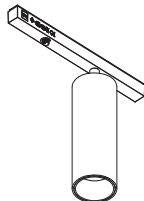
CCT	CRI	Initial Lumen	Watts	Beam Spread	Part Number Dimmable on board	Finish	Photometric
3000	90	440	4.2	21	03.6440	40= White 05= Chrome 14= Black	
2700	90	410	4.2	21	03.6401		

Spot Tracking Magnet 90



CCT	CRI	Initial Lumen	Watts	Beam Spread	Part Number Dimmable on board	Finish	Photometric
3000	80	1050	9.6	25	03.6410	40= White 05= Chrome 14= Black	
2700	90	850			03.6411		

Spot Tracking Magnet 120



CCT	CRI	Initial Lumen	Watts	Beam Spread	Part Number Dimmable on board	Finish	Photometric
3000	80	1050	9.6	25	03.6412	40= White 05= Chrome 14= Black	
				39	03.6425		
2700	90	850		25	03.6413		
				39	03.6424		





architectural

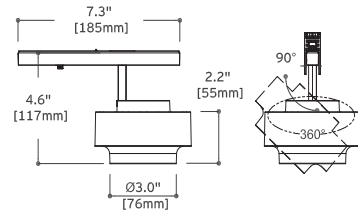
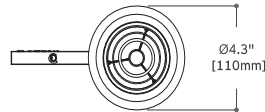
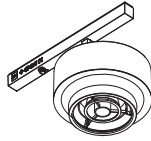
The Tracking Magnet Suspension Up & Down

High-tech LED lighting system for interior architecture

Fixture Type

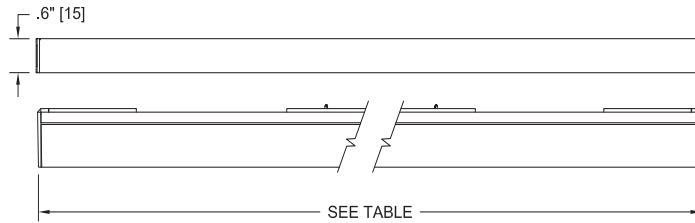
Job Name

Anthony Spot Track



CCT	CRI	Initial Lumen	Watts	Beam Spread	Part Number Dimmable on board	Finish	Photometric
3000	90	1870	17	20	03.6400	A40 = White A05 = Chrome A14 = Black	
				30	03.6402		
				40	03.6404		
2700	90	1785		20	03.6401		
				30	03.6403		
				40	03.6405		

Light Strip



Length	CRI	CCT	Initial Lumen	Watts	Part Number Built-in 20-100% Dimming
11.8" (300mm)	80	2700	680	7.5	03.6370.14.90
		3000	700		03.6360.14.90
23.6" (600mm)	80	2700	1360	15	03.6371.14.90
		3000	1400		03.6361.14.90
35.4" (900mm)	80	2700	2039	22.5	03.6372.14.90
		3000	2100		03.6362.14.90
47.2" (1200mm)	80	2700	2719	30	03.6373.14.90
		3000	2800		03.6363.14.90
59" (1500mm)	80	2700	3399	37.5	03.6374.14.90
		3000	3500		03.6364.14.90





architectural

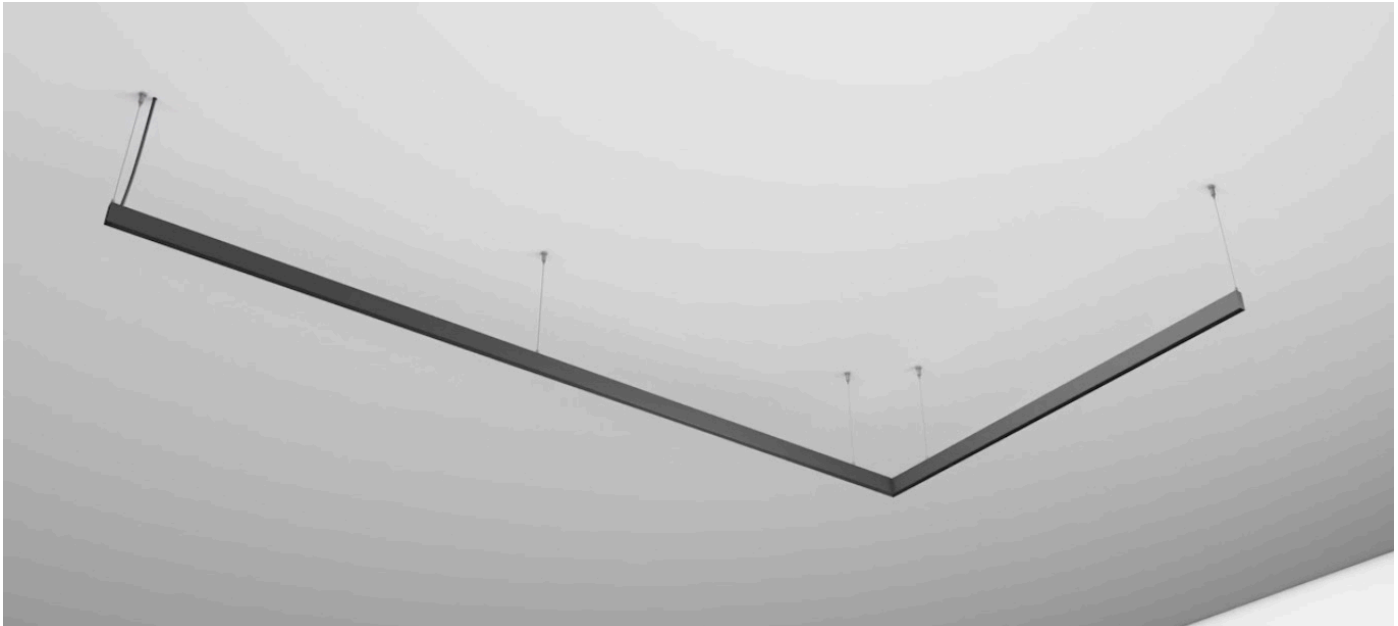
The Tracking Magnet Suspension Up & Down

High-tech LED lighting system for interior architecture

Fixture Type

Job Name

Visit FLOS Worldwide YouTube channel for installation videos



How to Specify

A. Select and position corners

1. Horizontal – Connect sections on flat surfaces (90° corner)

B. Fill lengths between corners with Linear Housings

3', 6', or 9' sections can be specified as feed or intermediate profiles. Profile can be easily cut to site to exact length and joined together.

C. Drivers

Quantity of drivers determined by total wattage or light elements in section (total maximum possible per linear foot is 34W). Maximum driver distance is 15'. Locate drivers nearby.

D. Select Spot heads

Linear strips are available in five nominal lengths: 1', 2', 3', 4' and 5'. Individual units can be adjusted from 20–100% with on board switch.

Note: Specify quantities in boxes

A. Housing Corners			B. Linear Profiles					
<input type="checkbox"/> 06.1524	A40 = White A05 = Chrome A14 = Black	Horizontal Corner	Feed Unit Profile	Finish		Intermediate Profile	Finish	
<input type="checkbox"/> 06.1514					39.4" (1m)	<input type="checkbox"/> 06.1519		39.4" (1m)
<input type="checkbox"/> 06.1515	40= White 05= Chrome 14= Black				59" (1.5m)	<input type="checkbox"/> 06.1520	40= White 05= Chrome 14= Black	59" (1.5m)
<input type="checkbox"/> 06.1516					78.7" (2m)	<input type="checkbox"/> 06.1521		78.7" (2m)

C. Driver		D. Light Modules				
<input type="checkbox"/> LED96W24V-Non-Dim	LED Driver 96W	Spot Tracking 50	Spot Tracking 90	Spot Tracking 120	Anthony Spot Track	Light Strip
		(See table)	(See table)	(See table)	(See table)	(See table)

