

# Light Cut Halogen/CMH

Knife-edge interior cove lighting system for interior architecture

## Description

The Light Cut is a linear cove lighting system comprising a knife-edge extruded profile which integrates perfectly in drywall ceilings and moveable spot modules. To achieve more innovative light effects you can use linear LEDs in warm white or RGB for ambient light. The LED modules are anchored directly to the profile and are interconnectable. The system is available in two sizes depending on the installation. It has accessories for visual comfort optimization and color filters. Perimeter channels or central installation can be made with this system using double channels with two opening widths.

## Lamps

- Halogen  
20 or 35W, MR16 MH, GX 10
- Metal Halide  
50W, MR16, GX 5.3
- LED Linear Strip  
1.75W, 77lm, RGB  
3.5W, 144lm, RGB  
3.5W, 228lm, 3000K, CRI 85  
7W, 456lm, 3000K, CRI 85

## Construction

- Knife edge profiles made of extruded aluminum
- Composite housings are composed of fiberglass covered in plaster for a drywall look

## Notes

- Profile is available for 5/8" or 1/2" drywall applications
- System available in two standard openings: 2.8" and 5.5"
- Listings: UL Listed, IP 20 dry rated only, Class 2
- Only spots are Halogen/CMH. Strips are LED.

## Electrical

- Spot modules have integral power supplies
- J-boxes should be placed with regularity throughout the cove.
- Distance between j-boxes should be decided based on how many spot modules are being utilized
- Spot modules wattage is model dependent
- Linear modules are constant 24 volt with remote power supply
- Linear modules are 6 watts per linear foot for the white option and 3 watts per linear foot for the RGB option
- RGB controls to be ordered separately as required

## Housing

- Cove system designed for use with or without composite housings
- Linear LEDs require composite housing component
- Housings are half circles
- Made of fiberglass covered in plaster and should be painted on the jobsite to match the ceiling finish

## Photometrics

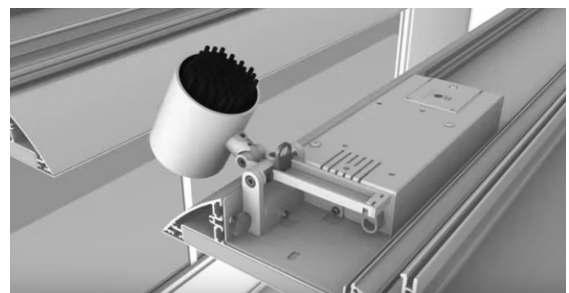
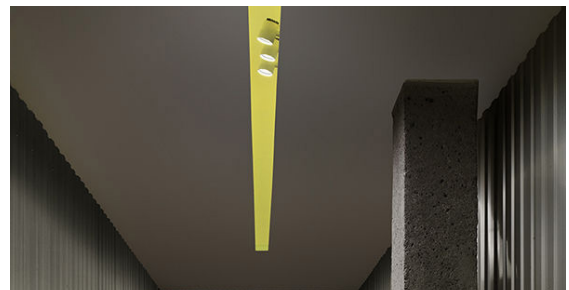
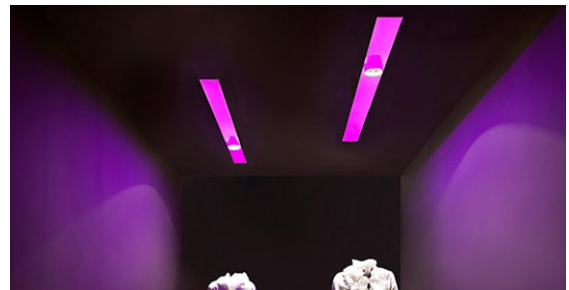
For current IES files please visit [usa.flos.com](http://usa.flos.com)

## Warranty

2 years from date of sale

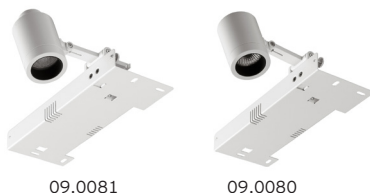
Fixture Type .....

Job Name .....



## Luminaires

### Spot Modules



09.0081

09.0080

- Accent spot modules can be rapidly exchanged and repositioned without tools
- Additional interchangeable filters are available

### Linear Strip Modules



08.8294

- Linear LED can be rapidly exchanged and repositioned without tools
- Light elements are quick to position and connect automatically with two mounting clips



architectural

# Light Cut Halogen/CMH

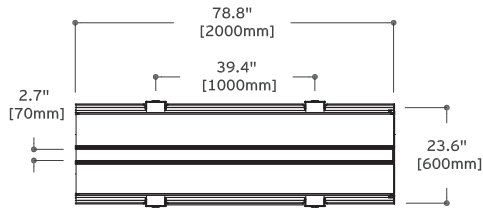
Knife-edge interior cove system for interior architecture

Fixture Type .....

Job Name .....

## Channel 2.75" [70mm] Profile

Light Cut 2.75" [70mm] Aluminum profile is adapted to 5/8" ceiling thickness.  
The Composite Housing\* is developed for 1/2" ceiling thickness.

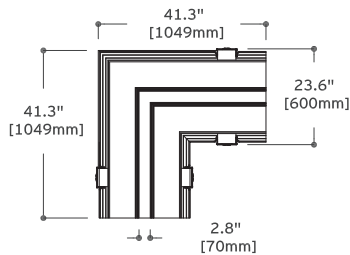


Length	Part Number for Aluminum profile (1 unit per code)	Finish	Part Number for Composite Housing*		
			1 Unit	3 units	9 units
78.74" (2m)	08.8550-1.14.90	14 = Black	SA.2517.1	SA.2510.1	SA.2511.1
	08.8550-1.30.90	30 = White			

\* Composite housing reduces the channel from 2.75" to 2.36".

## Channel 2.75" [70mm] Corner

Light Cut 2.75" [70mm] Composite Corner + Aluminum Profile for 5/8" ceiling

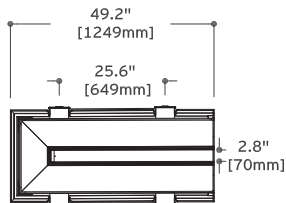


Length	Part Number for Aluminum Corner	Part Number for Composite Corner Housing*
43.7" x 43.7" (1.01m x 1.01m)	SA.2512-1.120-P	SA.2512.3.001

\* Composite housing reduces the channel from 2.75" to 2.36".

## Channel 2.75" [70mm] End Cap

Light Cut 2.75" [70mm] Composite End Cap + Aluminum Profile for 5/8" ceiling



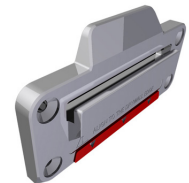
Length	Part Number for Aluminum End Cap	Part Number for Composite End Cap Housing*
39.4" [1m]	SA.2513.3.120-P	SA.2513.3.001

\* Composite housing reduces the channel from 2.75" to 2.36".

## Optional Accessories

Ceiling Anchorage

08.8426.00





architectural

# Light Cut Halogen/CMH

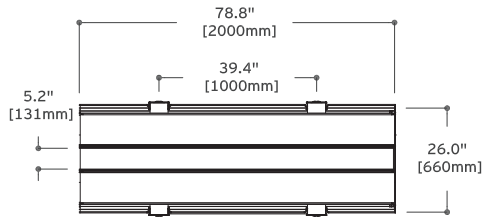
Knife-edge interior cove system for interior architecture

Fixture Type .....

Job Name .....

## Channel 5.12" [130mm] Profile

Light Cut 5.12" [130mm] Aluminum profile is adapted to 5/8" ceiling thickness.  
The Composite Housing\* is developed for 1/2" ceiling thickness.

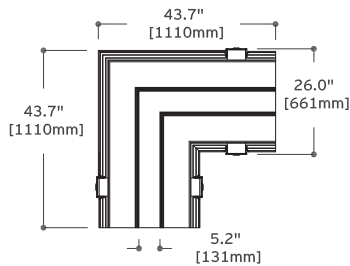


Length	Part Number for Aluminum profile (1 unit per code)	Finish	Part Number for Composite Housing*		
			1 Unit	3 units	9 units
78.74" (2m)	08.8550-1.14.90	14 = Black	SA.2518.1	SA.2514.1	SA.2500.1
	08.8550-1.30.90	30 = White			

\* Composite housing reduces the channel from 5.12" to 4.72".

## Channel 5.12" [130mm] Corner

Light Cut 5.12" [130mm] Composite Corner + Aluminum Profile for 5/8" Ceiling

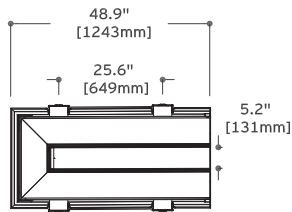


Length	Part Number for Aluminum Corner	Part Number for Composite Corner Housing*
43.7" x 43.7" (1.01m x 1.01m)	SA.2515.3.120-P	SA.2515.3.006

\* Composite housing reduces the channel from 5.12" to 4.72".

## Channel 5.12" [130mm] End Cap

Light Cut 5.12" [130mm] Composite End Cap + Aluminum Profile for 5/8" Ceiling



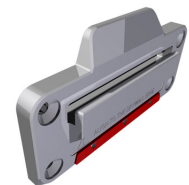
Length	Part Number for Aluminum End Cap	Part Number for Composite End Cap Housing*
39.4" (1m)	SA.2516.3.120-P	SA.2516.3.001

\* Composite housing reduces the channel from 5.12" to 4.72".

## Optional Accessories

Ceiling Anchorage

08.8426.00



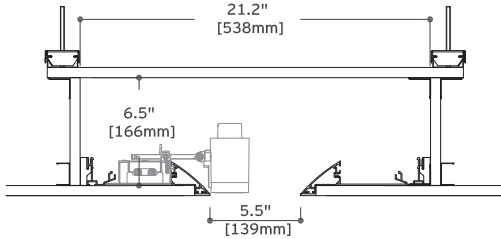


Fixture Type .....  
 Job Name .....

architectural  
**Light Cut Halogen/CMH**  
 Knife-edge interior cove system for interior architecture

**Perimeter Profile**

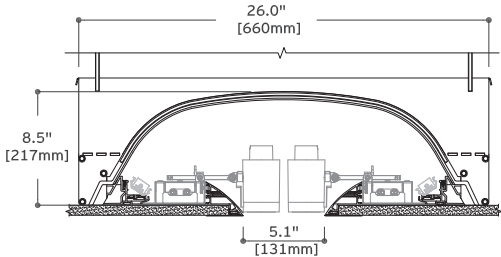
Light Cut Perimeter Aluminum Profile for 5/8" ceiling thickness



Length	Part Number for Aluminum profile (1 unit per code)	Finish
39.375" (1m)	08.8374-1.14	14 = Black
	08.8374-1.30	30 = White
78.74" (2m)	08.8372-1.14	14 = Black
	08.8372-1.30	30 = White

**Perimeter Corner**

Light Cut Perimeter Aluminum Profile Inner/Outer Corner for 5/8" Ceiling

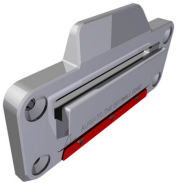


Length	Part Number for Inside Corner Aluminum profile	Finish	Part Number for Outside Corner Aluminum profile	Finish
43.7" x 43.7" (1.01m x 1.01m)	08.8376-1.14	14 = Black	08.8378-1.14	14 = Black
	08.8376-1.30	30 = White	08.8378-1.30	30 = White

**Optional Accessories**

Ceiling Anchorage

08.8426.00





architectural

# Light Cut Halogen/CMH

Knife-edge interior cove system for interior architecture

Fixture Type .....

Job Name .....

## Light Strip Modules

### Light Strip RGB Module

RGB module indirect lighting developed to be installed in the Light Cut System.

### Light Strip Module

Indirect lighting module developed to be installed in the Light Cut System.



08.8294

Length	Initial Lumen	Watts	Part Number
7.8"	77	1.75	08.8294.00A96
15.5"	154	3.5	08.8296.00A9S

Length	CRI	CCT	Initial Lumen	Watts	Part Number
7.8"	85	3000	228	3.5	08.8512.00.90
15.5"			456	7	08.8513.00.90

## Spot Modules

Spot Module developed to be installed in Light Cut system

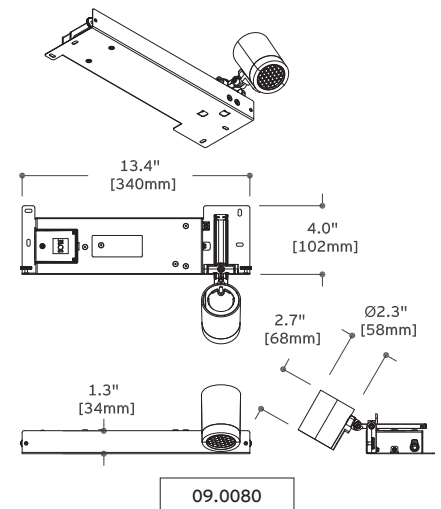
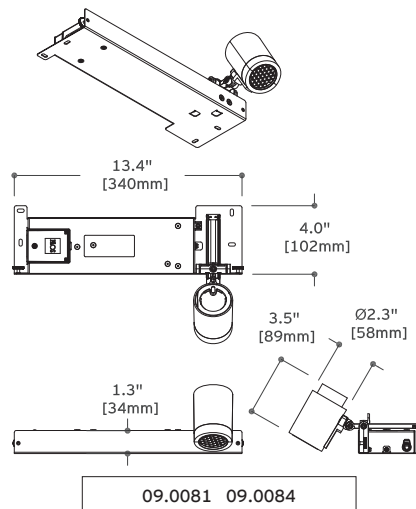


09.0081



09.0080

Lamp	Lamp Holder	Wattage	Part Number	Dimmable
MR 16 MH	GX 10	20	09.0081.14.90	Non dimmable
MR 16 MH	GX 10	20	09.0081.30.90	Non dimmable
MR 16 MH	GX 10	35	09.0084.14.90	Non dimmable
MR 16 MH	GX 10	35	09.0084.30.90	Non dimmable
MR 16	GX 5.3	50	09.0080.14.90	ELV dimming
MR 16	GX 5.3	50	09.0080.30.90	ELV dimming





architectural








# Light Cut Halogen/CMH

Knife-edge interior cove system for interior architecture

Fixture Type .....

Job Name .....

## Optional Accessories

Image	QTY	Item Number	Description
		08.8380.30	Screening cylinder, White
		08.8380.14	Screening cylinder Power Led, Black
		08.8363.30	Filter-Holder, White
		08.8363.14	Filter-Holder, Black
		08.8182.14	Honeycomb anti-glare screen
		08.8230.64.0D	Blue Filter
		08.8230.65.0D	Sky Blue Filter





architectural







# Light Cut Halogen/CMH

Knife-edge interior cove system for interior architecture

Fixture Type .....

Job Name .....

## Optional Accessories (cont'd)

Image	QTY	Item Number	Description
		08.8230.66.0D	Amber Filter
		08.8230.67.0D	Red Filter
		08.8230.98.0D	UV Filter
		08.8230.CL	Cold Light Lens
		08.8230.DL	Day Light Lens
		08.8501.ND	Neodimium Lens





architectural

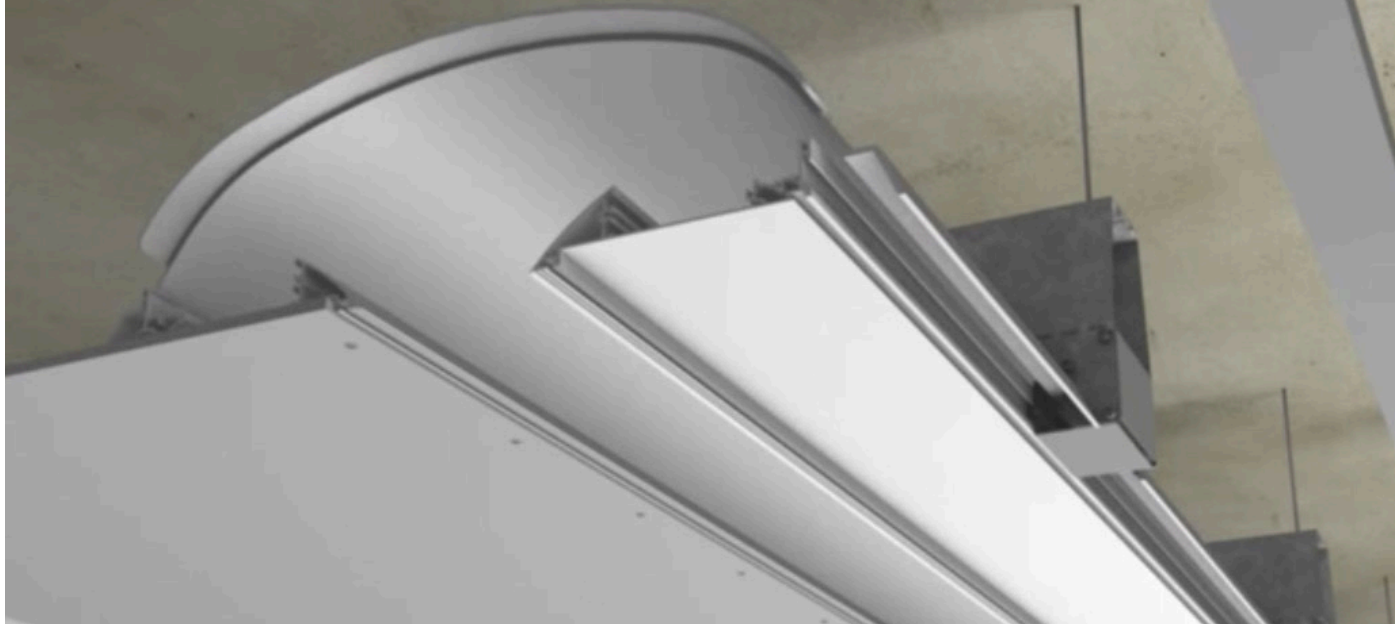
# Light Cut Halogen/CMH

Knife-edge interior cove system for interior architecture

Fixture Type .....

Job Name .....

Visit FLOS Worldwide YouTube channel for installation videos



## How to Specify Halogen/CMH

### A. Light Cut Channel 2.5" [70mm]

1. Aluminum profiles
2. Composite housing
3. End Cap
4. Corner
5. Choose the spotlights / LED bars

### B. Light Cut Channel 5.11" [130mm]

1. Aluminum profiles
2. Composite housing
3. End Cap
4. Corner
5. Choose the spotlights / LED bars

### C. Light Cut Perimeter

1. Aluminum profiles
2. Corner
3. Choose the spotlights / LED bars

Note: Specify quantities in boxes

A. Light Cut Channel 2.5" [70mm]									
Aluminum Profile 5/8" thickness			Composite Housing		End Cap		Corner		
<input type="checkbox"/> 08.8550-1.14.90	14 = Black	78.74" (2m)	<input type="checkbox"/> SA.2517.1	78.74" (2m) qty 1	<input type="checkbox"/> SA.2513.3.120-P	Aluminum Profile	<input type="checkbox"/> SA.2512.1.120-P	Aluminum Profile	
<input type="checkbox"/> 08.8550-1.30.90	30 = White		<input type="checkbox"/> SA.2510.1	78.74" (2m) qty 3			<input type="checkbox"/> SA.2513.3.001	Composite	<input type="checkbox"/> SA.2512.3.001
			<input type="checkbox"/> SA.2511.1	78.74" (2m) qty 9					
B. Light Cut Channel 5.11" [130mm]									
Aluminum Profile 5/8" thickness			Composite Housing		End Cap		Corner		
<input type="checkbox"/> 08.8550-1.14.90	14 = Black	78.74" (2m)	<input type="checkbox"/> SA.2518.1	78.74" (2m) qty 1	<input type="checkbox"/> SA.2516.3.120-P	Aluminum Profile	<input type="checkbox"/> SA.2515.3.120-P	Aluminum Profile	
<input type="checkbox"/> 08.8550-1.30.90	30 = White		<input type="checkbox"/> SA.2514.1	78.74" (2m) qty 3			<input type="checkbox"/> SA.2516.3.001	Composite	<input type="checkbox"/> SA.2515.3.006
			<input type="checkbox"/> SA.2500.1	78.74" (2m) qty 9					
C. Light Cut Perimeter					Light Strip Modules		Spot Modules		
Profiles			Corner		<input type="checkbox"/> 08.8294.00A96 <input type="checkbox"/> 08.8296.00A9S <input type="checkbox"/> 08.8512.00.90 <input type="checkbox"/> 08.8513.00.90		<input type="checkbox"/> 09.0081.14.90 <input type="checkbox"/> 09.0080.14.90 <input type="checkbox"/> 09.0081.30.90 <input type="checkbox"/> 09.0080.30.90 <input type="checkbox"/> 09.0084.14.90 <input type="checkbox"/> 09.0084.30.90		
<input type="checkbox"/> 08.8374-1.14	14 = Black	39.4" (1m)	<input type="checkbox"/> 08.8376-1.14	14 = Black					Inner Corner
<input type="checkbox"/> 08.8374-1.30	30 = White		<input type="checkbox"/> 08.8376-1.30	30 = White					
<input type="checkbox"/> 08.8372-1.14	14 = Black	78.74" (2m)	<input type="checkbox"/> 08.8378-1.14	14 = Black					Outer Corner
<input type="checkbox"/> 08.8372-1.30	30 = White		<input type="checkbox"/> 08.8378-1.30	30 = White					

