



architectural

Kap 5.7" Round Wall-Washer Metal Halide

Ceiling Recessed Trimless Wall-Wash

Description

Kap Recessed combines a trimless edge, exquisitely textured finish and deep recess of the highest quality metal halide or halogen light source to form a sculptural blend of architecture and science. When installed, the ceiling appears as if crafted from a thick, rich material and the room glows with striking colors rendered in crisp white light.

Lamps

- Metal Halide:
65W T4 bi-pin, G 8.5

Construction

- Injection molded specular reflector with a matte finish
- Lamp module is diffused with a low mineral content, color neutral, glass diffuser

Notes

- Fixture comes with separate trimless installation frame which allows for installation in sheet rock and special construction ceilings up to 1.2" thick
- Listings: UL Listed, dry location only

Electrical

- Fixture includes electronic non-dimmable ballast.

Housing

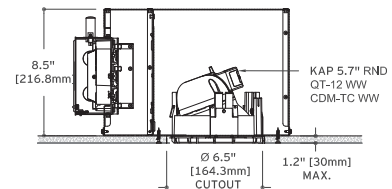
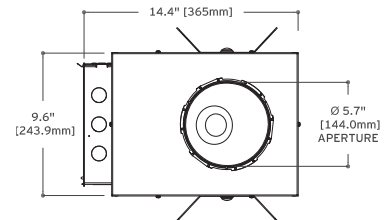
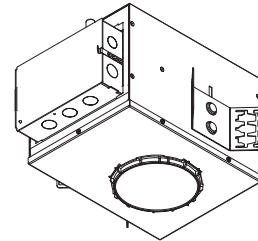
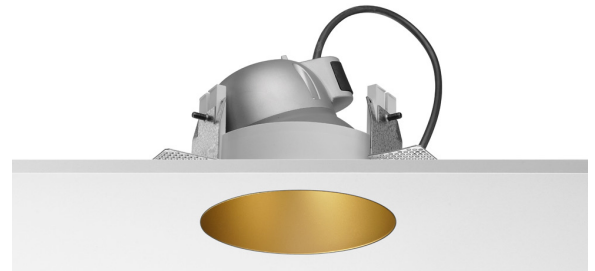
- Non-IC rated housing for new construction, 20 ga. sheetmetal supplied with (2) mounting bars and removable mounting brackets.

Photometrics

For current IES files please visit flosusa.com

Warranty

2 years from date of sale



How to Specify ex. 03.4470.GL.90

QTY	Item Number	Description	Finish	Power Supply
	03.4470	Kap Recessed Round Wall-Washer, Metal Halide, 65W, T4 bi-pin, G 8.5	<input type="checkbox"/> 74 = Black <input type="checkbox"/> B1 = White <input type="checkbox"/> BU = Blue <input type="checkbox"/> CU = Copper <input type="checkbox"/> GL = Gold	90 = Housing with integral ballast, non-dimmable, 120-277V

Optional Accessories

Image	QTY	Item Number	Description
		08.8491.xx	Trimmed Installation Frame Kap 5.7" Wall-Washer (to match fixture finish)

