



architectural

# Light Sniper Square Wall-Washer LED

Ceiling Recessed Trimmed Fixed Wall-Wash

## Description

High performance recessed luminaires available for halogen, metal halide, or integral LED. With a 1.75" aperture and a true 40 degree aiming angle, the Light Sniper offers high comfort due to the back visual position of the light source. Toolless aiming holds its focus indefinitely. Fixed, adjustable and wallwash versions available.

## Lamps

- LED: Cree  
11W, 910lm, 2700K, CRI 90  
11W, 1210lm, 3000K, CRI 80

## Construction

- Fixture made of two die cast aluminum bodies.
- Round trim made of steel sheet 1/16" thick with white matte finish.
- It incorporates inner trim ring in three different finishes: black, matte gold and chrome.

## Notes

- Factory suggests 5.7" (145mm) minimum plenum height
- Listings: UL Listed, IP44 damp location with added lens

## Electrical

- Non-IC rated splice box for retrofit or new construction contains 0-10v constant current dimmable driver

## Photometrics

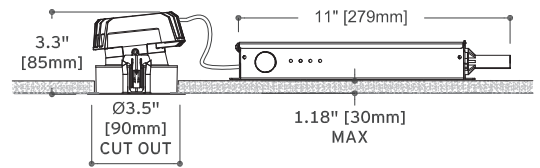
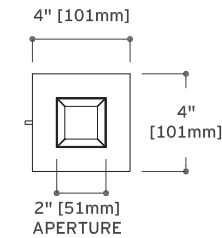
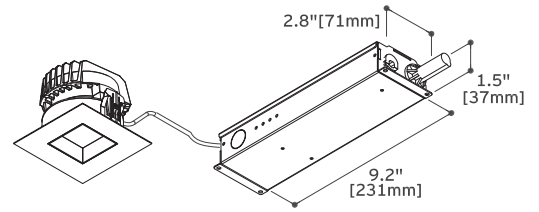
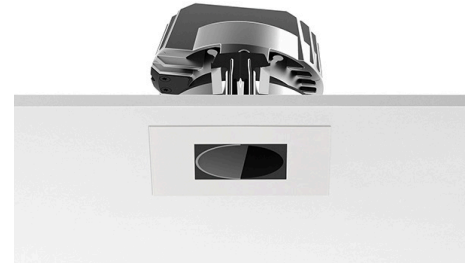
For current IES files please visit [usa.flos.com](http://usa.flos.com)

## Warranty

2 years from date of sale

Fixture Type .....

Job Name .....



## How to Specify ex. 03.4991.06.UL

QTY	Item Number	Description	Finish	Power Supply
	03.4991	Light Sniper Square Wall-Washer, LED, 11W, 910lm, 2700K, CRI 90	☐ 06 = White Trim/Chrome Ring	UL = Splice box 1% dim, 0-10V, 120V 7U = Splice box 1% dim, 0-10V, 277V
	03.4990	Light Sniper Square Wall-Washer, LED, 11W, 1210lm, 3000K, CRI 80	☐ 06 = White Trim/Chrome Ring	UL = Splice box 1% dim, 0-10V, 120V 7U = Splice box 1% dim, 0-10V, 277V





architectural



# Light Sniper Square Wall-Washer LED

Ceiling Recessed Trimmed Fixed Wall-Wash

Fixture Type .....

Job Name .....

## Optional Accessories

Image	QTY	Item Number	Description
		08.8240.00A	Flush trim
		08.8243.00	Ceiling protector accessory to be used without housing for trimmed application

