

## Light Sniper Square Wall-Washer Halogen, CMH

Ceiling Recessed Trimmed Fixed Wall-Wash

### Description

High performance recessed luminaires available for halogen, metal halide, or integral LED. With a 1.75" aperture and a true 40 degree aiming angle, the Light Sniper offers high comfort due to the back visual position of the light source. Toolless aiming holds its focus indefinitely. Fixed, adjustable and wallwash versions available.

### Lamps

Halogen: 50W, MR16, GX5.3

Metal Halide: 20 or 39W, MR16 MH, GX10

### Construction

Fixture made of two injected aluminum bodies

Round trim made of steel sheet 1/16" thick with white matte finish

It incorporates inner ring in three different finishes: black, matte gold and chrome

The metal halide reflectors have a pure aluminum specular finish

### Notes

Listings: UL Listed, IP23 dry location only

### Finish

- White
- 06 Chrome



### Electrical

Halogen fixture includes electronic low voltage transformer

Metal Halide fixture includes electronic non-dimmable ballast

### Housing

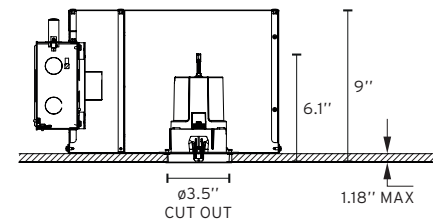
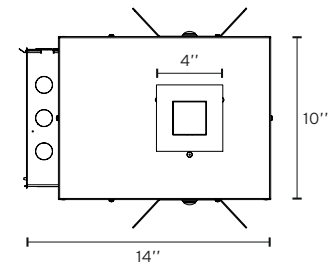
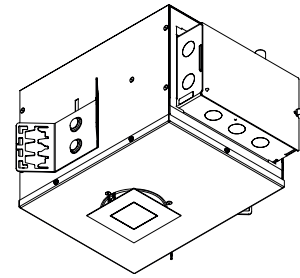
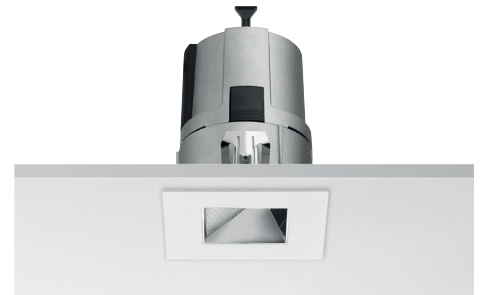
Non-IC rated housing for new construction, 20 ga. sheetmetal supplied within (2) mounting bars and removable mounting brackets

### Photometrics

For current IES files please visit [usa.flos.com](http://usa.flos.com)

### Warranty

2 years from date of sale



### How to Specify



ex. 03.4651.06.90

QTY	Item Number	Description	Finish	Power Supply
	03.4651	Light Sniper Square Wall Washer, Halogen, 50W, MR16, GX 5.3	<input type="checkbox"/> <input checked="" type="checkbox"/> 06 = White Trim/Chrome Ring	90 = Housing with integral transformer, ELV, 120V
	03.4656	Light Sniper Square Wall Washer, Metal Halide, 20 or 39W, MR16 MH, GX 10	<input type="checkbox"/> <input checked="" type="checkbox"/> 06 = White Trim/Chrome Ring	90 = Housing with integral ballast, non-dimmable, 120V

**Light Sniper Square Wall-Washer Halogen, CMH**

Ceiling Recessed Trimmed Fixed Wall-Wash

**Optional Accessories**

Image	QTY	Item Number	Description
		08.8240.00A	Flush trim
		08.8243.00	Ceiling protector accessory to be used without housing for trimmed application