

Kap ø80 (ø3.2") Squared Wall-Washer

Ceiling Recessed Trimless Downlight

Description

LED trim-less luminaire for recessed mud-in mounting into plasterboard. Die-cast aluminum body with satin or metallic paint finish. A pre-installation frame is required. This LED downlight uses cutting edge technology which creates a higher powered downlight due to cooler operating electronics yielding 20% higher luminous flux than earlier models. The Trimless Ø80 mm (3.2") version has an exclusive Fast&Perfect installation tool.

Lamps

LED ARRAY: Bridgelux
 9.2W, 935lm, 2700K, CRI 90
 9.2W, 974lm, 3000K, CRI 90

Delivered lumens* from 565lm up to 732lm.

*Depending on the beam angle, reflector finish and diffuser.

Construction

Luminaire body made of die cast aluminium
 Softening diffuser provided

Factory recommends 9" minimum plenum height when installing driver splice box from below

Photometrics

For current IES files please visit usa.flos.com

Warranty

2 years from date of sale.

Finish

B1 White CU Copper 74 Black BU Blue GL Matt Gold



Electrical

Fixture is constant current, low voltage LED with integral power supply

Fixture is 9.2 watts

Notes

Pre-installation frame has to be ordered separately

Non IC rated luminaire

Splice Box has to be ordered separately.
 3 Options:

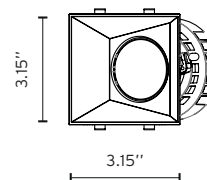
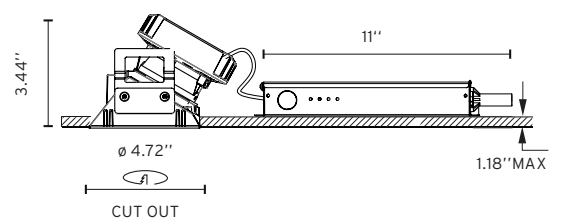
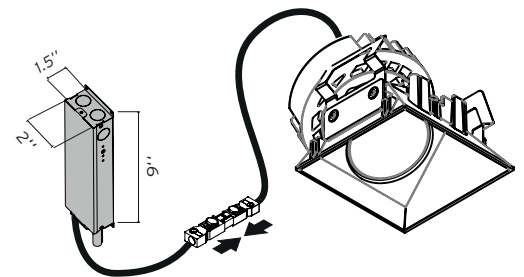
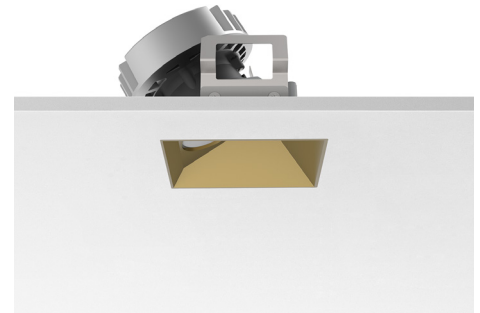
- 0-10V Dimming 120V
- 0-10v Dimming 277 V
- ELV Dimming 120 V

Available in 5 different finishes: Black, White, Gold, Copper and Blue

Maximum tilt angle for the Kap 80 (3.2") adjustable version is 20°

LED included not replaceable

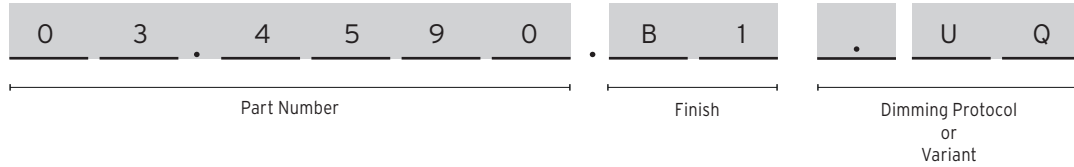
Listings: UL listed, IP44



Kap ø80 (ø3.2") Squared Wall-Washer

Ceiling Recessed Trimless Downlight

How to Specify



How to Specify ex. 03.4590.B1.UQ

| Part Number | CCT | CRI | Initial Lumens | Watts | Beam Angle | Finish | Dimming Protocol |
|-------------|------|-----|----------------|-------|------------|---|---|
| 03.4590 | 3000 | 90 | 974 | 9.2W | 19° | □ B1 = White ■ 74 = Black ■ CU = Cooper ■ BU = Blue ■ GL = Gold | UQ = US product. Splice Box* not included *Has to be Always supply by FLOS |
| 03.4591 | 2700 | 90 | 935 | | | | |


Required Splice Box

| QTY | Image | Item Number | Description |
|-----|-------|--------------------|---|
| | | SP14W500MA-ELV-E01 | Splice Box 14W, 20% dim, ELV, 120V. Size: 11" x 2" x 1.5" |
| | | SP14W500MA-120-V01 | Splice Box 14W, 1% dim, 0-10V, 120V. Size: 11" x 2" x 1.5" |
| | | SP14W500MA-277-V01 | Splice Box 14W, 1% dim, 0-10V, 277V . Size: 11" x 2" x 1.5" |


Kap $\varnothing 80$ ($\varnothing 3.2''$) Squared Wall-Washer

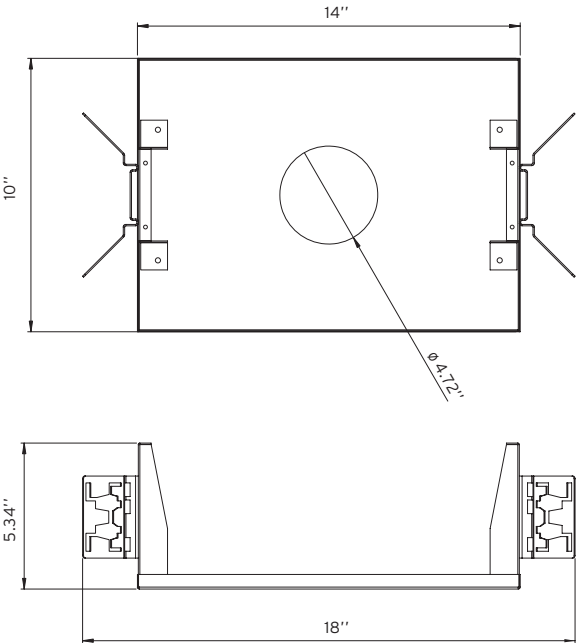
Ceiling Recessed Trimless Downlight

Required Accessories

| Image | QTY | Item Number | Description |
|---|-----|-------------|--|
|  | | 08.9103.00 | Installation trimless Frame Kap80 Square |

Optional Accessories

| Image | QTY | Item Number | Description |
|---|-----|-------------|--|
|  | | 08.9101.00 | Fast&Perfect tool $\varnothing 153 / \varnothing 120$ mm ($\varnothing 6.02'' / \varnothing 4.72''$) |

| | | | |
|---|--|-----------|---|
|  | | TRAY-0019 | Registration Tray -non electrical, place holder for non IC new construction, $\varnothing 4.72''$ |
|---|--|-----------|---|